

**GENERAL**

European Oak floorboard

Broadloom wool carpet

Ceiling and bulkhead finished in flat acrylic Dulux Natural White paint

Walls finished in low sheen Dulux Summer Cloud half paint

LED lighting

Roller blinds

Laminate storage cupboards

Free-to-air TV, Pay TV &amp; NBN outlets in living &amp; master bedroom

Clipsal prestige power outlets

Fermax Security video intercom

**HEATING AND COOLING**

Daikin VRV multi-split air conditioning system

**KITCHEN**

Laminate cabinetry – refer to palette

Feature Caesarstone benchtops – refer to palette

Mosaic tile splashback

Soft close drawers and cupboards

Stainless steel top mount double sink

Gooseneck sink mixer

**APPLIANCES**

Fisher &amp; Paykel wall oven

Fisher &amp; Paykel 4 burner electric cooktop

Fisher &amp; Paykel integrated rangehood

Fisher &amp; Paykel dish drawer

Fisher &amp; Paykel microwave

**EN-SUITE AND BATHROOM**

Caesarstone benchtop – refer to palette

Wall hung vanity

Wall hung mirror cabinet

Porcelain tile flooring

Mosaic tile feature wall

Toughened glass shower screen

Chrome tapware

**LAUNDRY**

Laminate cabinetry – refer to palette

Caesarstone benchtops – refer to palette

Rectified white tile splashback

Stainless steel overmount tub

Gooseneck sink mixer

**DOORS AND WINDOWS**

Internal doors finished in Dulux Aquanamel Vivid White

Aluminium powder coated external doors and window frames



# CEDAR

**ON COLLINS • KIAMA**


**CEDAR**  
ON COLLINS • KIAMA

Proudly by  

**FRESH HOPE**  
 COMMUNITIES

**APARTMENT 05**

Fresh Hope Communities gives no warranty or makes any representations about the accuracy of the information or representations made. Illustrations are representative only of the designs and are to be used as a guide only. The information is provided solely as general information and the final product may differ from what is displayed. External areas exclude carpark and storage.

**CEDARKIAMA.COM.AU**

APARTMENT 05

BUILDING A

GROUND LEVEL

COLOUR PALETTE: HARBOUR GREY

# CEDAR

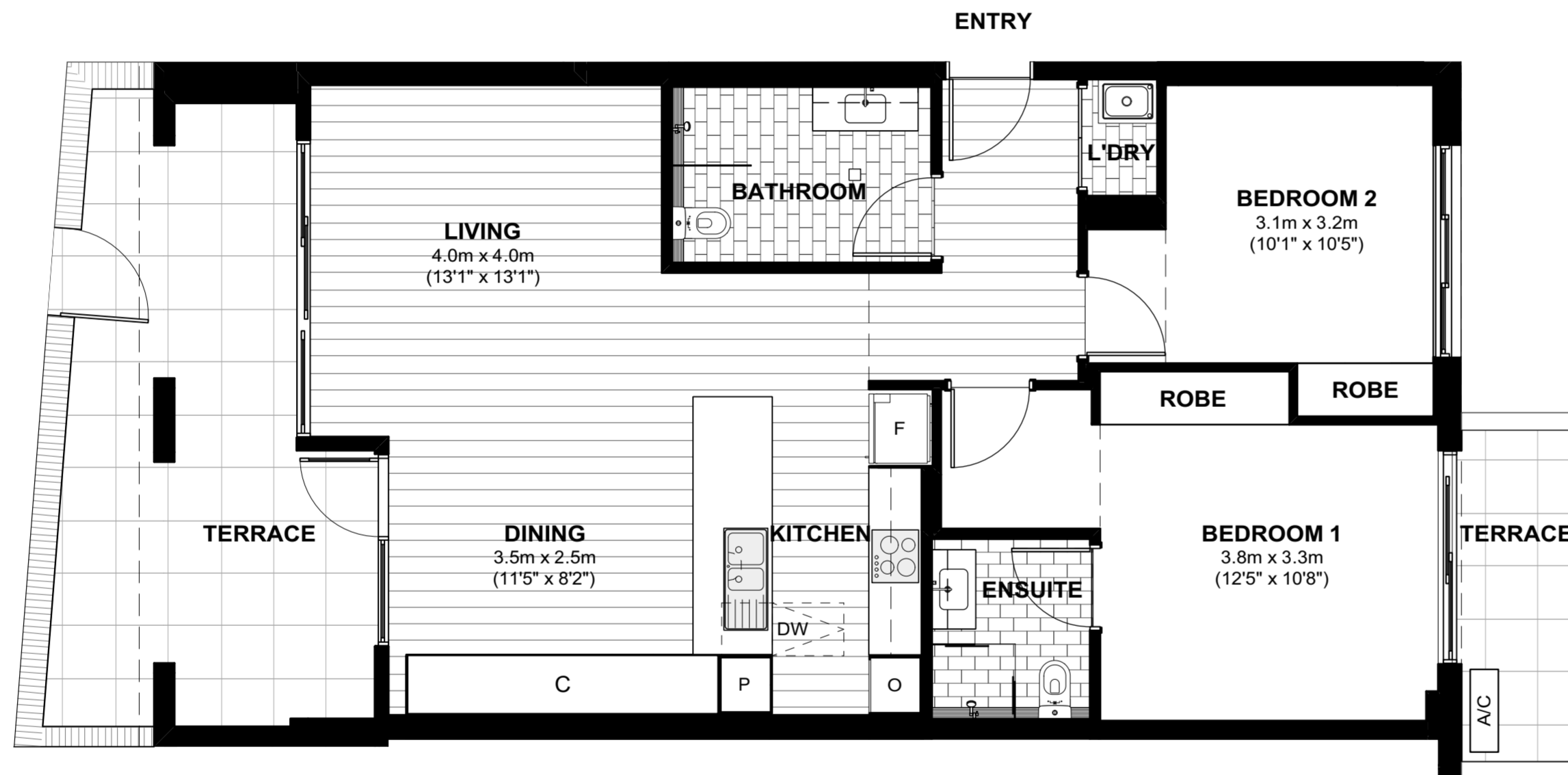
ON COLLINS • KIAMA



2



2



## AREAS

INTERIOR	89.5m <sup>2</sup>
EXTERIOR	26.2m <sup>2</sup>
TOTAL	115.7m <sup>2</sup>

